

Hybrid IONVISION System Quick User Guide

March, 2011
2M IonVision Technologies

Contents

System provide two remote access ways:

- Through feature-rich client application
- Through any Web Browsers, such as Windows IE, Mozilla Firefox, Google Chrome, Opera, Opera-mini, from PC, PDA or mobile phones.

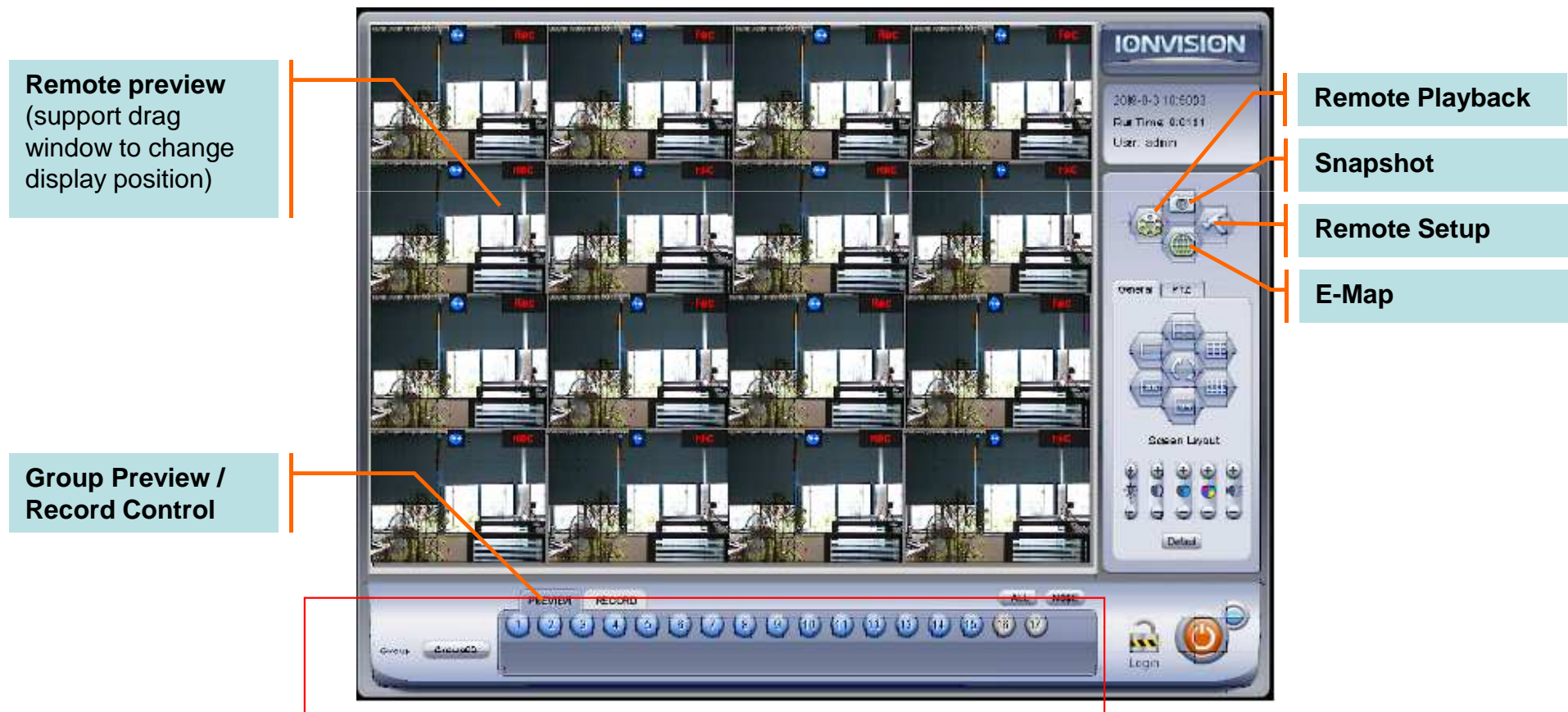
- **IONVISION Client Operation**
 - **Group View**
 - **Remote Playback**
 - **Remote Configuration and Control**
- **Mobile Server Operation**
 - **Mobile Server Setup**
 - **Mobile Access**

IONVISION Client Operation

IONVISION Client is a feature-rich client application that running on a remote computer. It can manage tens of IONVISION servers in a centralized station.

The main operations on IONVISION Client:

- Group view (max 128channels at the same time);
- Remote control and configuration of IONVISION Servers;
- Remote playback;

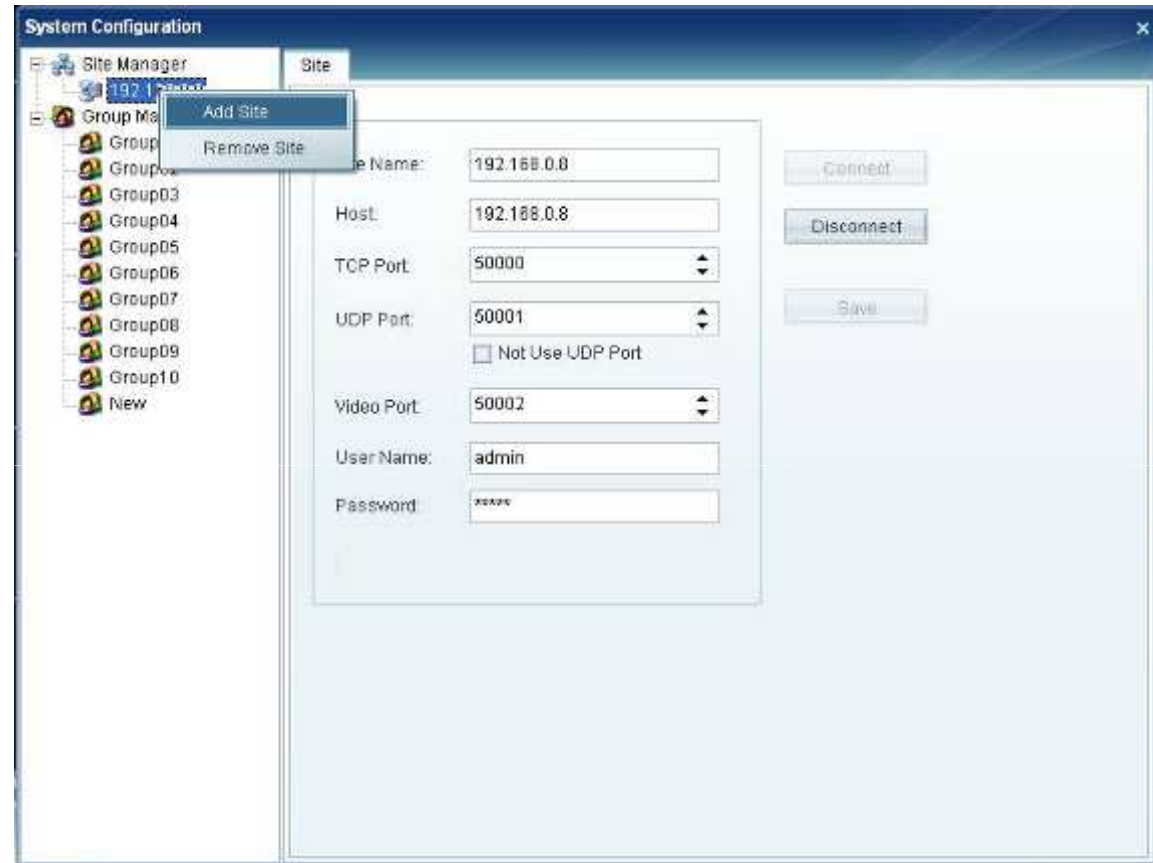


The default login username and password is admin.

IONVISION Client Operation - Group Preview



In IONVISION Client Main GUI, click this button and choose **System Configuration** to enter system configuration window.

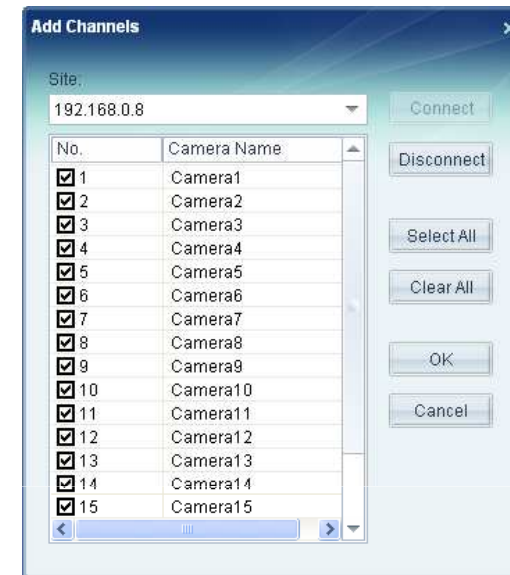
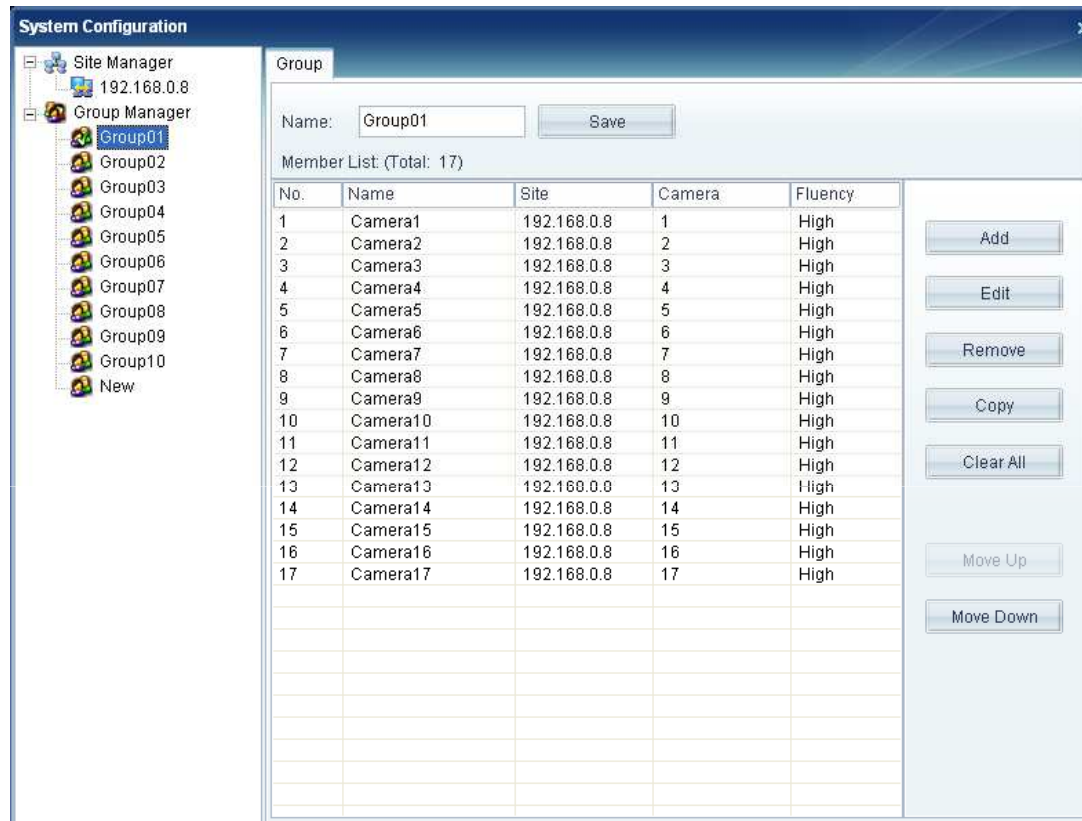


Step 1 To add a site:

1. In **Site Manager** tree, right-click to select **Add Sites**;
2. In the right panel, input site connection parameters.
3. Click **Save** button;
4. Click **Connect** button to establish the connection.

Note: Before adding a site, be sure the username and password has remote access privilege.

IONVISION Client Operation - Group Preview




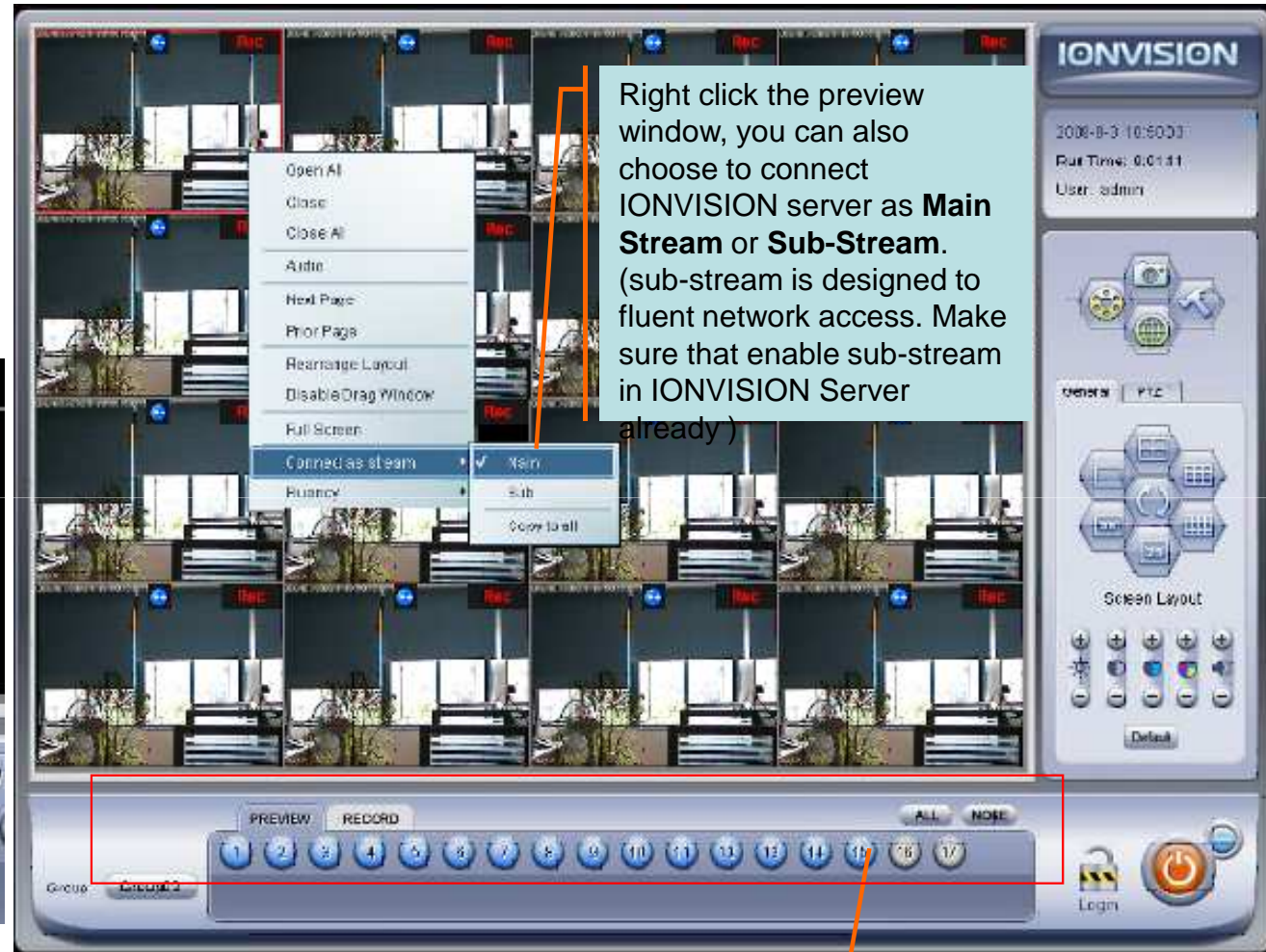
Step 2 To add a group:

1. In **Group Manager** tree, select a group.
2. In the right panel, click **Add**.
3. Select a site you added, **Connect** it, and select channels you want to add to this group.
4. Click **Save** button to this group.

Note: You can add channels from multiple servers in one group.

IONVISION Client Operation - Group Preview

In IONVISION Client main GUI, choose a group to connect. The group with  icon has channels configured.



Right click the preview window, you can also choose to connect IONVISION server as **Main Stream** or **Sub-Stream**. (sub-stream is designed to fluent network access. Make sure that enable sub-stream in IONVISION Server already)

In this panel, you can control the preview of channels in this group. Or you can control the manual recording status of the channels in this remote site.

Note: you can not save recordings in client compute.

Contents

- **IONVISION Client Operation**
 - Group View
 - **Remote Playback**
 - Remote Configuration and Control
- **Mobile Server Operation**
 - Mobile Server Setup
 - Mobile Access

IONVISION Client Operation - Remote Playback



08/02/2011 PM 7:57:07 08/02/2011 PM 7:57:07

August 2009
SUN MON TUE WED THU FRI SAT
1
2 3 4 5 6 7 8
9 10 11 12 13 14 15
16 17 18 19 20 21 22
23 24 25 26 27 28 29
30 31

Volume [Slider]
Speed: 1x 1.5x 2x 4x 8x

Window: Channel: 1 Status: X Frame: 440 Recording Type: Continuous Motion Alarm 2009-8-21 14:19
Cam 01
[Clear All] 01 02 03 04 05 06 07 08 09 10 11 12 13 14 15 16 17 18 19 20 21 22 23 24
[x] Cam 01
[x] Cam 02
[x] Cam 03
[x] Cam 04
[x] Cam 05
[x] Cam 06

The remote playback GUI and operation is same to IONVISION Server Playback screen. Max 36ch simultaneously playback is supported.

Contents

- **IONVISION Client Operation**
 - Group View
 - Remote Playback
 - **Remote Configuration and Control**
- **Mobile Server Operation**
 - Mobile Server Setup
 - Mobile Access

IONVISION Client Operation - Remote Configuration

Choose System Setup

Time Line	Night							Day							Night									
	0	1	2	3	4	5	6	7	8	9	10	11	12	13	14	15	16	17	18	19	20	21	22	23
Every Day	Continuous record + Alarm record																							
Work Day																								
Holiday																								

The remote Configuration GUI and operation is same to IONVISION Server Configuration screen.

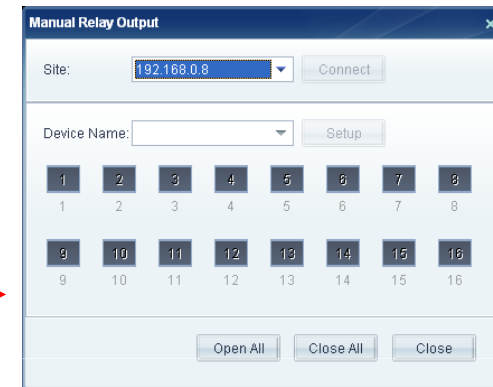
IONVISION Client Operation - Remote Control



Remote PTZ Control



Manual Relay Output



Remote Alarm Relay Output



Remote Manual Record Control

Contents

- **IONVISION Client Operation**
 - Group View
 - Remote Playback
 - Remote Configuration and Control
- **Mobile Server Operation**
 - Mobile Server Setup
 - Mobile Access

Mobile Server Operation

Access IONVISION Server from remote device with Web Browser

In the browser address bar, input the address: <http://dyn.2mcctv.com:8888>
(in this example, the Mobile Server address is dyn.2mcctv.com, and the web port is 8888.)

A screenshot of a mobile web browser interface. At the top, there is a blue header with the word "Mobile" in white. Below the header, the background is black. There are two yellow input fields: the first is labeled "User Name:" and contains the text "admin"; the second is labeled "Password:" and contains the text "admin". Below the input fields is a white button with the text "Login".

The default user name and password is ***admin***.

Login Page

System supports most of the web browsers, including Windows IE Explorer, Mozilla Firefox, Google Chrome, Opera, and most web browsers in mobile phones and PDAs.

Mobile Server Operation



Mobile		
Cam1:	Picture	Stream
Cam2:	Picture	Stream
Cam3:	Picture	Stream
Cam4:	Picture	Stream
Cam5:	Picture	Stream
Cam6:	Picture	Stream
Cam7:	Picture	Stream
Cam8:	Picture	Stream

Channel list screen



Video / Picture View

In the channel list screen, you can choose to connect IONVISION Mobile server in two modes:

- **RTSP Stream mode:** provide live video, max 30fps @ CIF resolution. (the mobile phone or computer need to support RTSP stream)
- **Motion Pictures View mode:** provide motion pictures, about 1fps motion pictures.